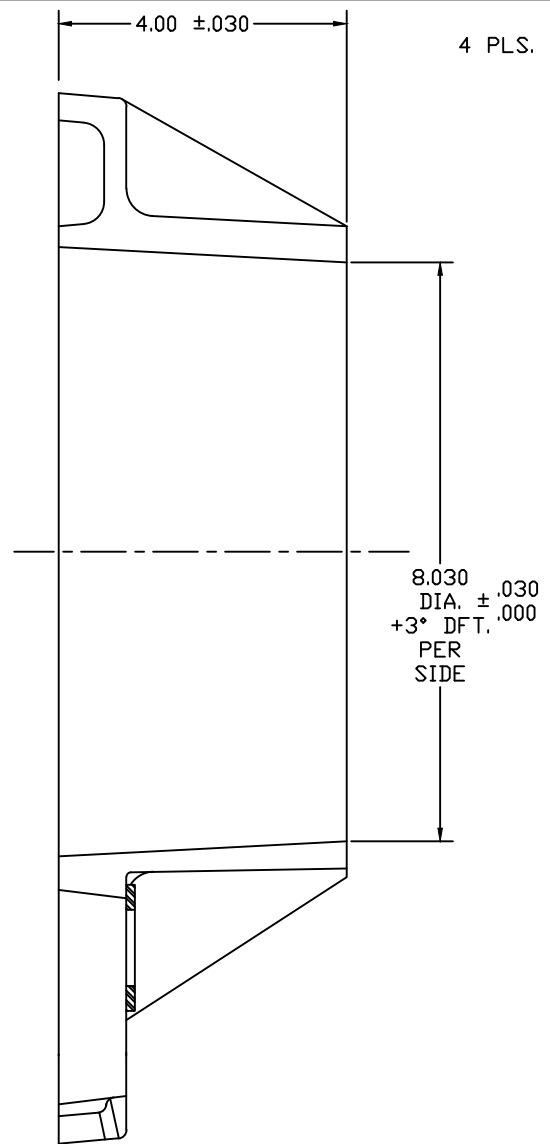
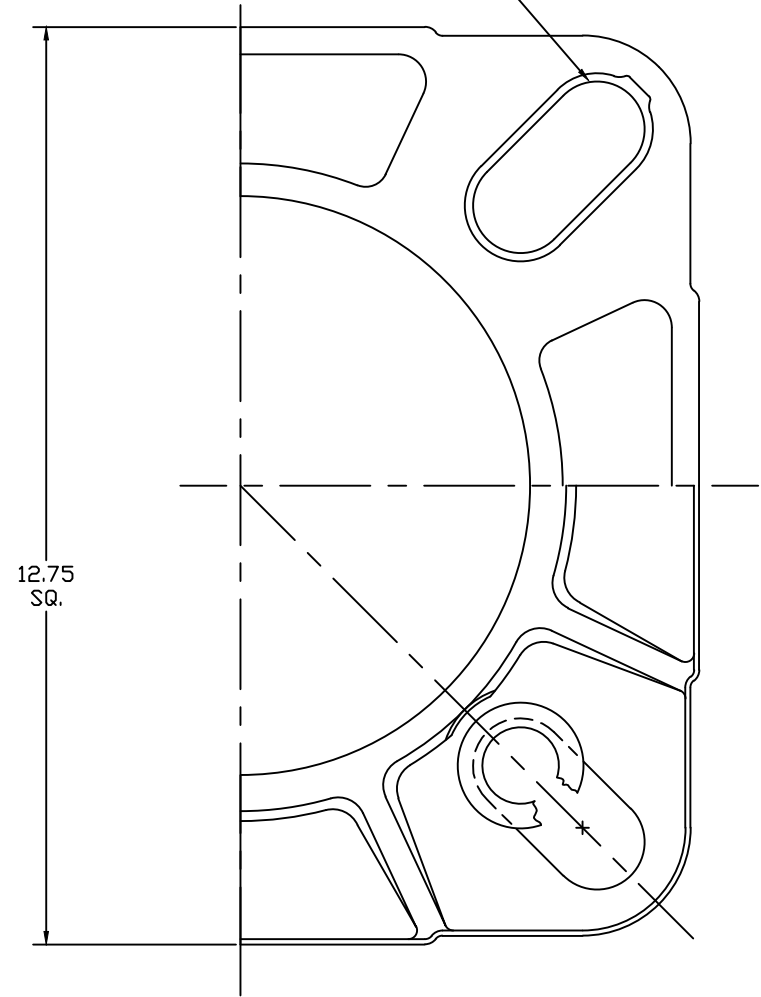


CASTING CAN BE SUPPLIED WITH AN AS CAST 8.03 DIA. 3° TAPERED CORE  $\begin{matrix} +.030 \\ -.000 \end{matrix}$  OR FINISHED STRAIGHT BORE

AB-8-T-HEAVY DUTY



.69 R PLUS 7° DRAFT PER SIDE  
4 PLS. EQUALLY SPACED ON 11.00 THRU 14.00 DIA. B.C.



JOB# 2240-T

AKRON FOUNDRY COMPANY		
8" HEAVY DUTY ANCHOR BASE		
6-7-00	356 T6	AB-8-T-HEAVY DUTY
FULL	L YERGIN	

RECOMMENDED BOLT - 1/4-20 N.C. X 5/8 LG. STAINLESS STEEL PLAIN HEX WASHER HEAD TYPE