

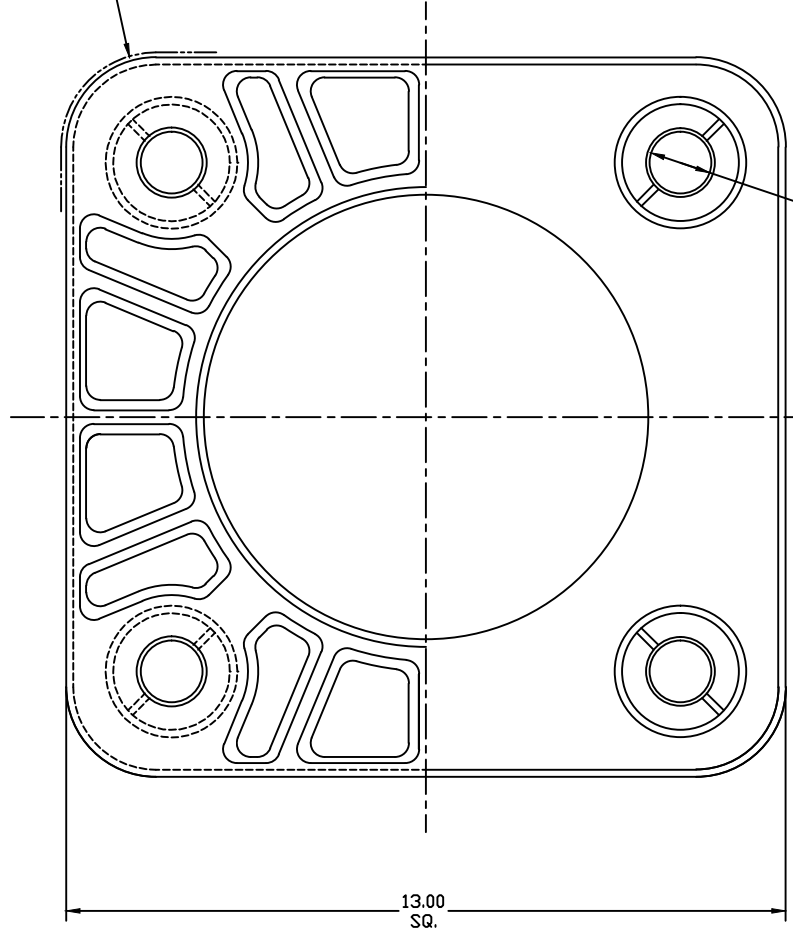
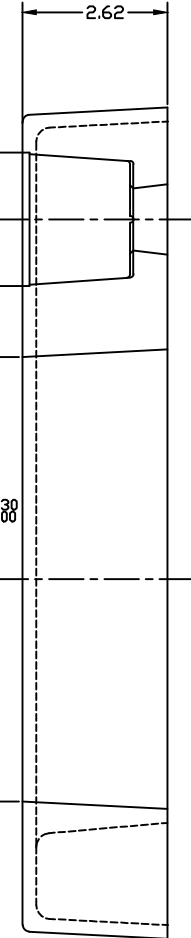
TB1-8"-2

REF OUTLINE AKRON FOUNDRY  
TB-1 SERIES TRANSFORMER BASE

2.34 DIA. CORE  
-4° DRAFT  
PER SIDE  
4 PLS EQ.  
SPACED ON  
13.000 DIA. B.C.  
"C" DIA. BORE  
FOR P.F. VANDAL  
RESISTANT COVER "C"

1.12 DIA. CORE  
PLUS 7° DRAFT  
PER SIDE  
4 PLS. EQUALLY  
SPACED ON  
13.00 DIA. B.C.

8.03 DIA.  $\pm 0.030$   
PLUS 3°  
DRAFT  
PER SIDE



JOB# 2235-2

REVISIONS		
A 10-11-05	1.00 RIBS ADDED	
AKRON FOUNDRY COMPANY		
8" ANCHORE BASE-DIA. POCKETS		
7-12-06	356 T6	AF-TB1-8"-2
FULL	IL YERGIN	