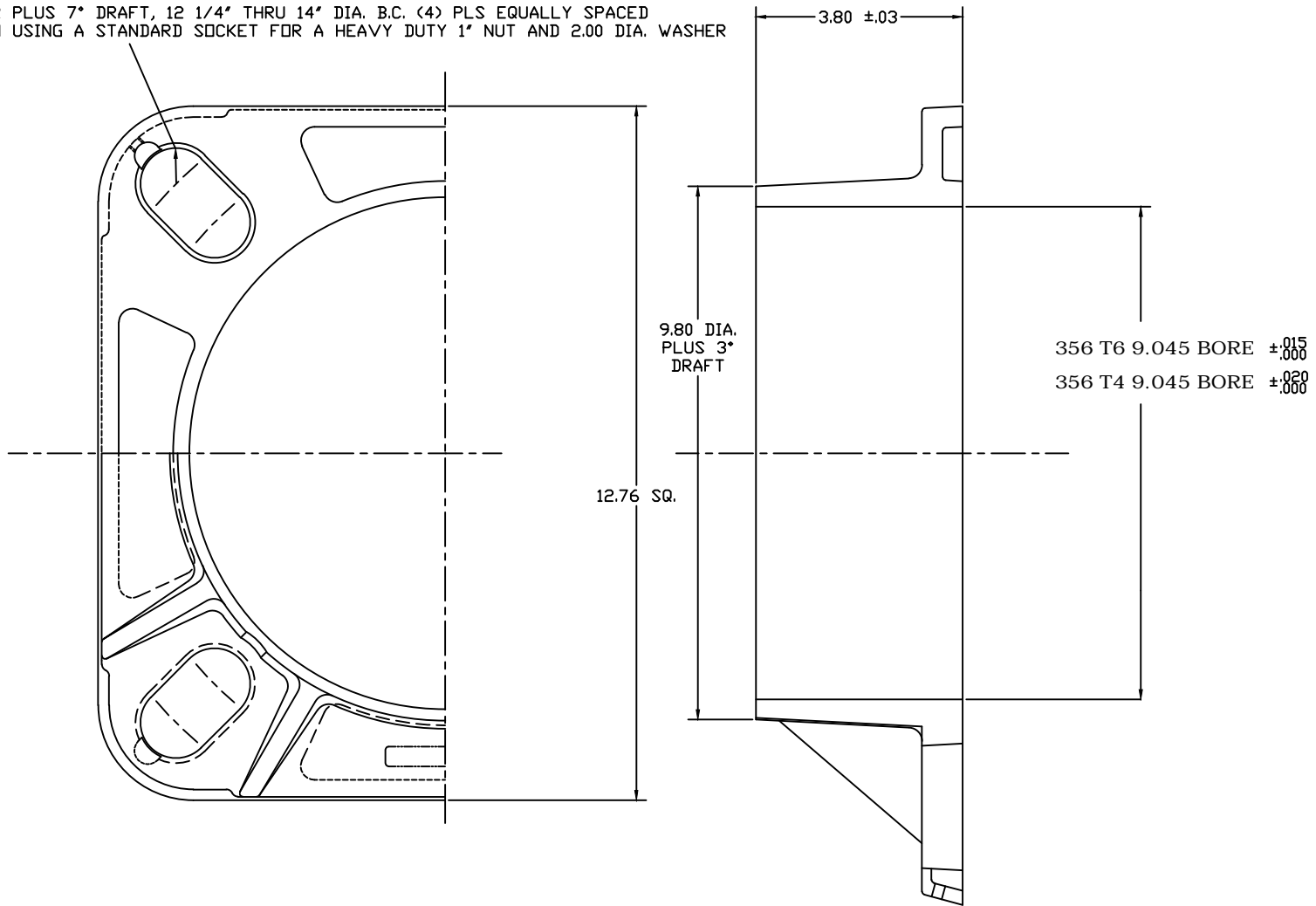


CASTING CAN BE SUPPLIED WITH AN AS CAST 9.045 DIA. $\pm \frac{.030}{.000}$ TAPERED CORE OR FINISHED STRAIGHT BORE

6661-.6

.63 R PLUS 7° DRAFT, 12 1/4" THRU 14" DIA. B.C. (4) PLS EQUALLY SPACED
WHEN USING A STANDARD SOCKET FOR A HEAVY DUTY 1" NUT AND 2.00 DIA. WASHER



JOB# 2367-S

AKRON FOUNDRY COMPANY

9" CAST ANCHOR BASE

8-18-05 356 T6 9"-1999-S
FULL IL YERGIN

PAGE 2/1A

RECOMMENDED BOLT - 1/4-20 N.C. X 5/8 LG. STAINLESS STEEL PLAIN HEX WASHER HEAD TYPE