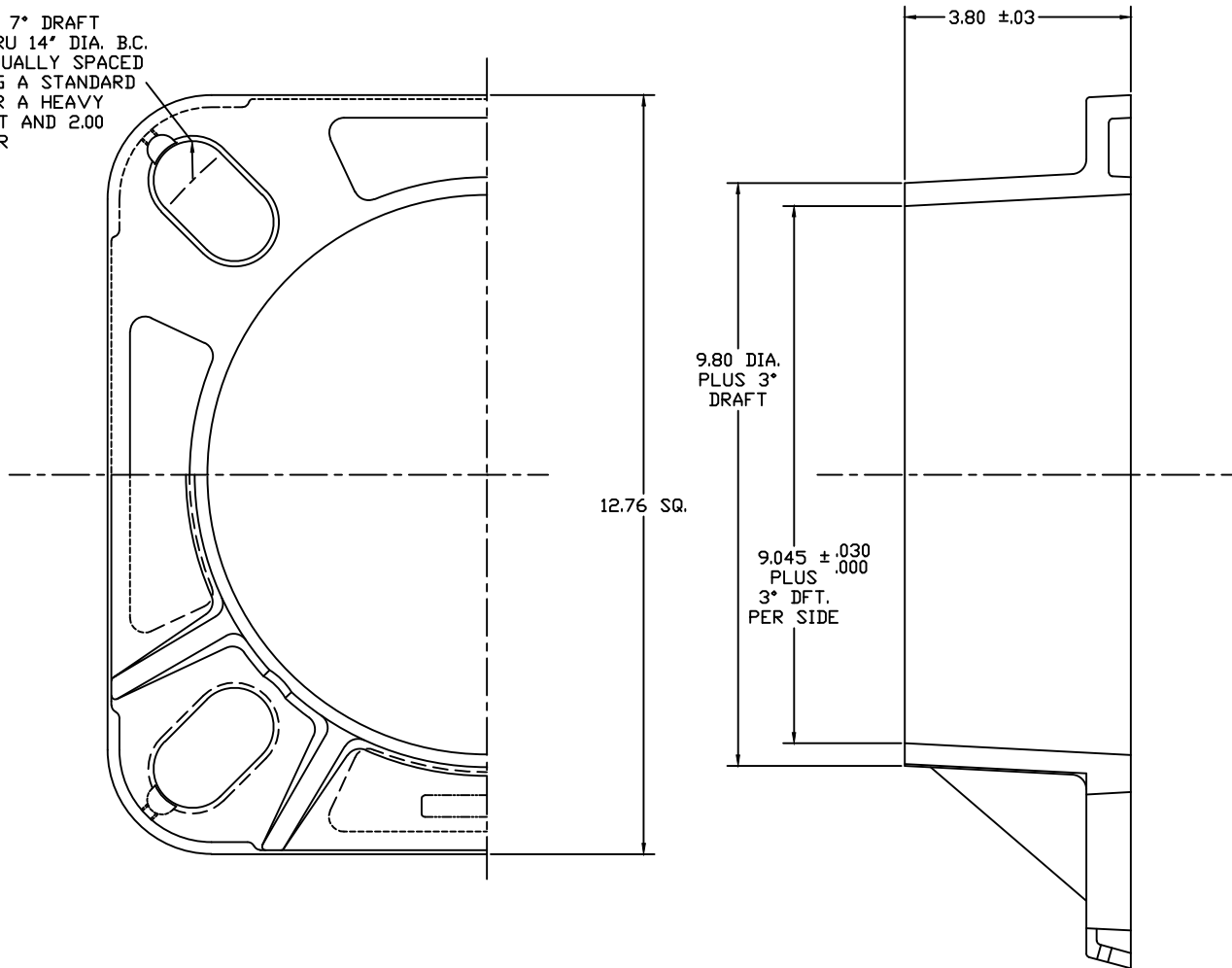


CASTING CAN BE SUPPLIED WITH AN AS CAST 9.045 DIA. $\pm .030$ TAPERED CORE OR FINISHED STRAIGHT BORE

6661-6

.63 R PLUS 7° DRAFT
 12 1/4" THRU 14" DIA. B.C.
 (4) PLS. EQUALLY SPACED
 WHEN USING A STANDARD
 SOCKET FOR A HEAVY
 DUTY 1" NUT AND 2.00
 DIA. WASHER



JOB# 2367-T

AKRON FOUNDRY COMPANY

9" CAST ANCHOR BASE

8-18-05 | 356 T6 | 9"-1999-T
 FULL | L YERGIN

PAGE 218

RECOMMENDED BOLT - 1/4-20 N.C. X 5/8 LG. STAINLESS STEEL PLAIN HEX WASHER HEAD TYPE