

CASTING CAN BE SUPPLIED WITH AN AS CAST 10.045 DIA. TAPERED CORE OR FINISHED STRAIGHT BORE IN EITHER 1" OR 1 1/4" ANCHORAGE

1-2661-.01

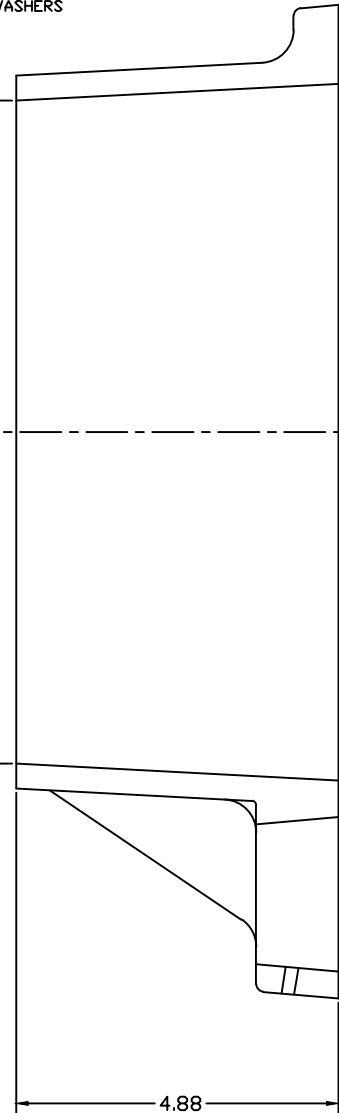
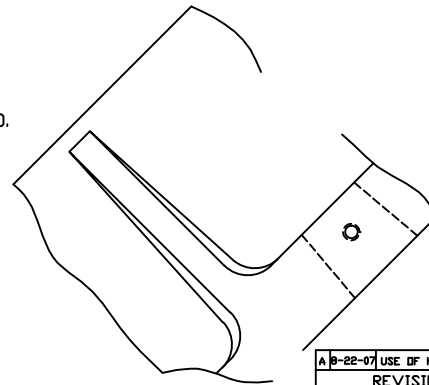
.56 R SLOT PLUS 5° DRAFT PER SIDE TYP. (4) CORNERS
EQ. SPACED ON 13.00 DIA. THRU 15.00 DIA. BOLT CIRCLES
2.00 DIA. O.D. WASHER TO BE USED ON 13.00 DIA. B.C. ONLY
FOR 15.00 DIA. B.C. & FOR USE WITH BOTTOMING LEVELING
NUTS ADJUSTMENT USE 2 3/4 DIA. O.D. X 1/2 THICK WASHERS

12.94 SQ.
MINUS 5°
PER SIDE

10.045 DIA. ± .030
PLUS
3° DFT.
PER SIDE

JOB# 8204-T-1 / 1" ANCHORAGE / SUPPLIED WITH TAPERED CORE I.D. OR BORED I.D.

JOB# 8204-T-2 / 1 1/4" ANCHORAGE / SUPPLIED WITH TAPERED CORE I.D. OR BORED I.D.



JOB# 8204-T-1 / 8204-T-2

AKRON FOUNDRY COMPANY

10" ANCHOR BASE

A 8-22-07 USE OF H.D. NUT ADDED
REVISIONS

11-7-00	356 T6
FULL	YERGIN

10"-1992-T