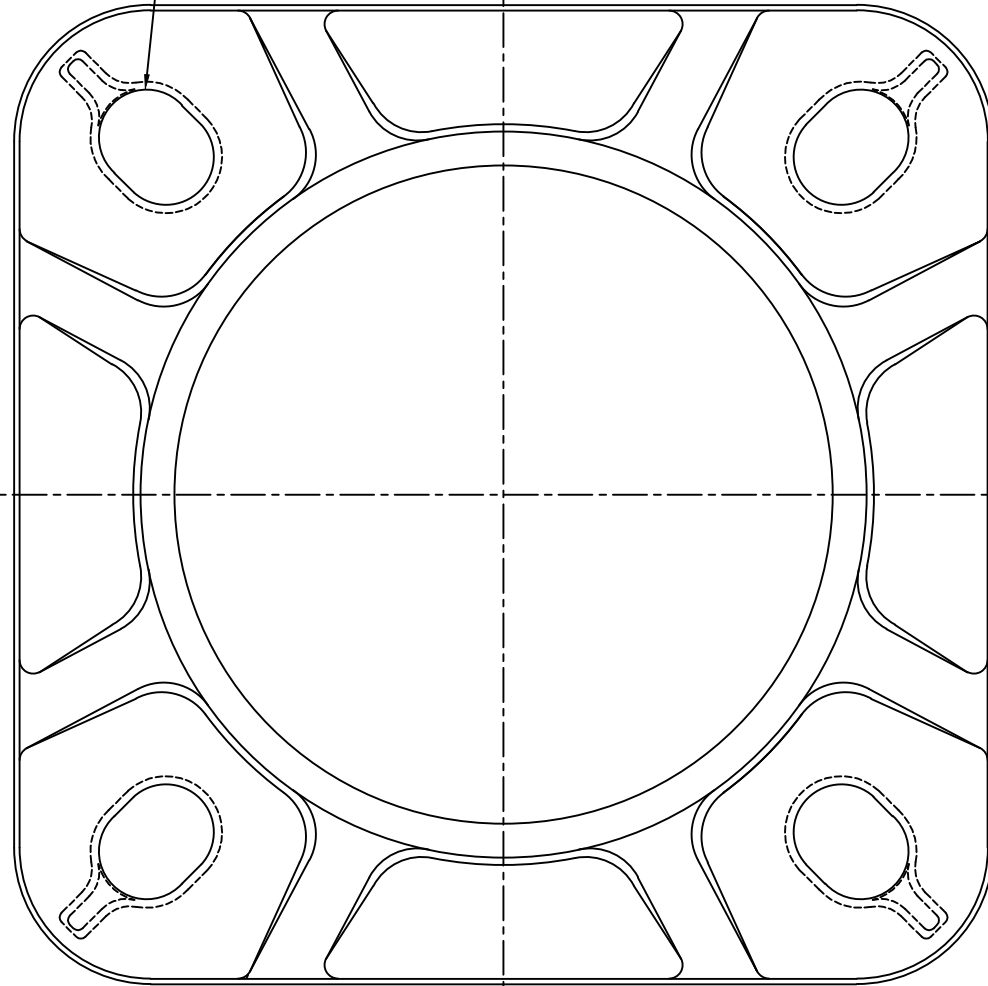


AF-12

1.76 SLOT (.88 R) PLUS 7° PER SIDE
4 PLS. EQUALLY SPACED
ON 17.50 DIA. THRU 18.50 DIA.
B.C. FOR 1.50 DIA. ANCHORE BOLTS
USING 3" DIA. O.D. WASHERS

12.06 DIA.
BORE ± .030
PRIOR TO
HEAT-TREATMENT

6.00
± .030



JOB# 2267-S

AKRON FOUNDRY COMPANY

12" DIA. ANCHORE BASE

2/01/01	356 T6
FULL	L. YERGIN

AF 12-S